



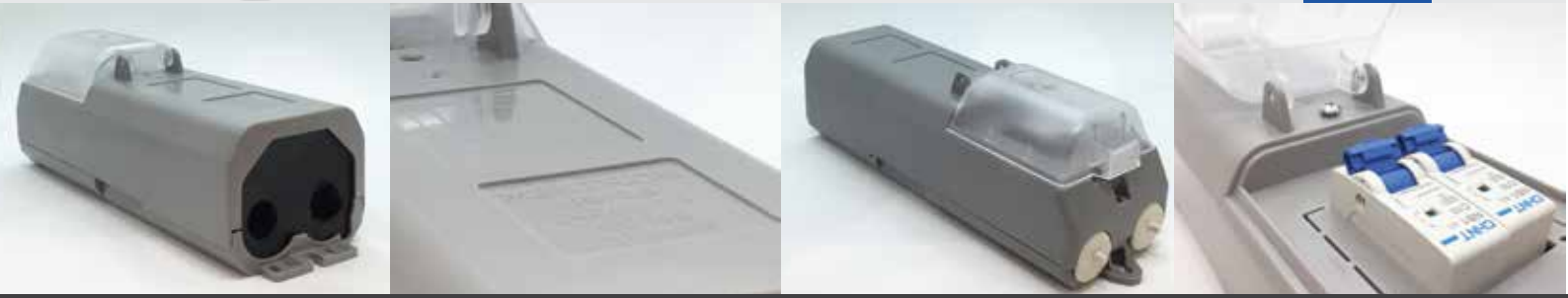
#ThePoleMaker

**MODULAR  
JUNCTION BOX**



**LOOP-IN-LOOP-OUT  
TERMINAL BLOCK**  
**JB-35**

# JB-35



## Technical Specifications

Brand : Mestron  
Model : JB-35  
Rated Voltages : 240V / 415V / 50Hz/60Hz

Rated Connecting Capacity : Incoming Cable (4X16mm<sup>2</sup> - 35mm<sup>2</sup>)

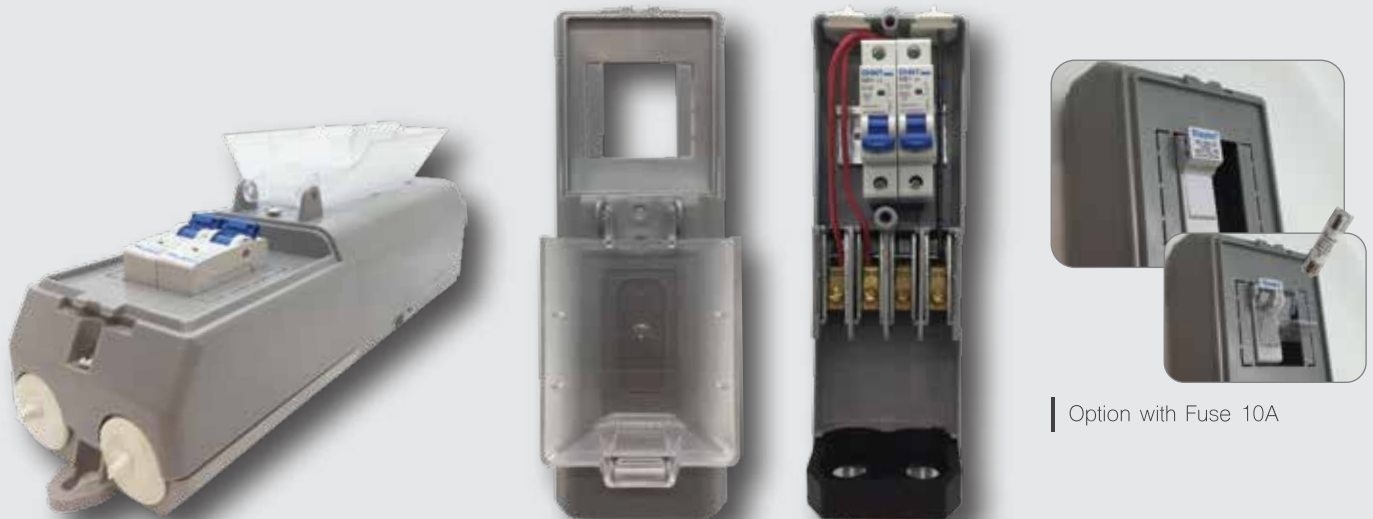
Rated Insulation Voltage : 500V

IP Rating : IP 54  
Cable Type : 1 Core 2.5mm x 2 Nos

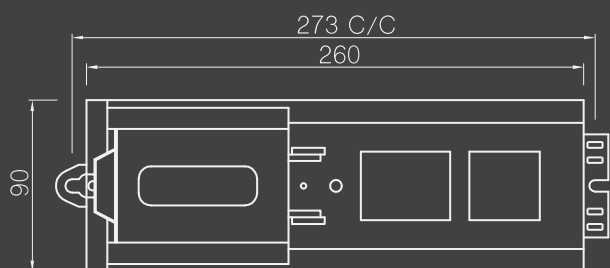
MCB Type : CHINT or Equivalence (Approved By JKR)  
Cable Entry : Two Core (PVC/SWA/PVC Cable)  
Type : Option with Fuse 10A/ Miniature Curcuit Breaker

Reference Standard Method of Test : IEC 998 - 1 :1990 & IEC 998 - 2 :1990

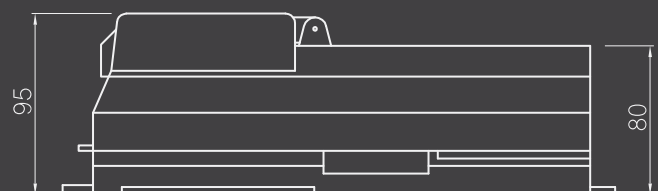
Life Span : 50,000 Hour



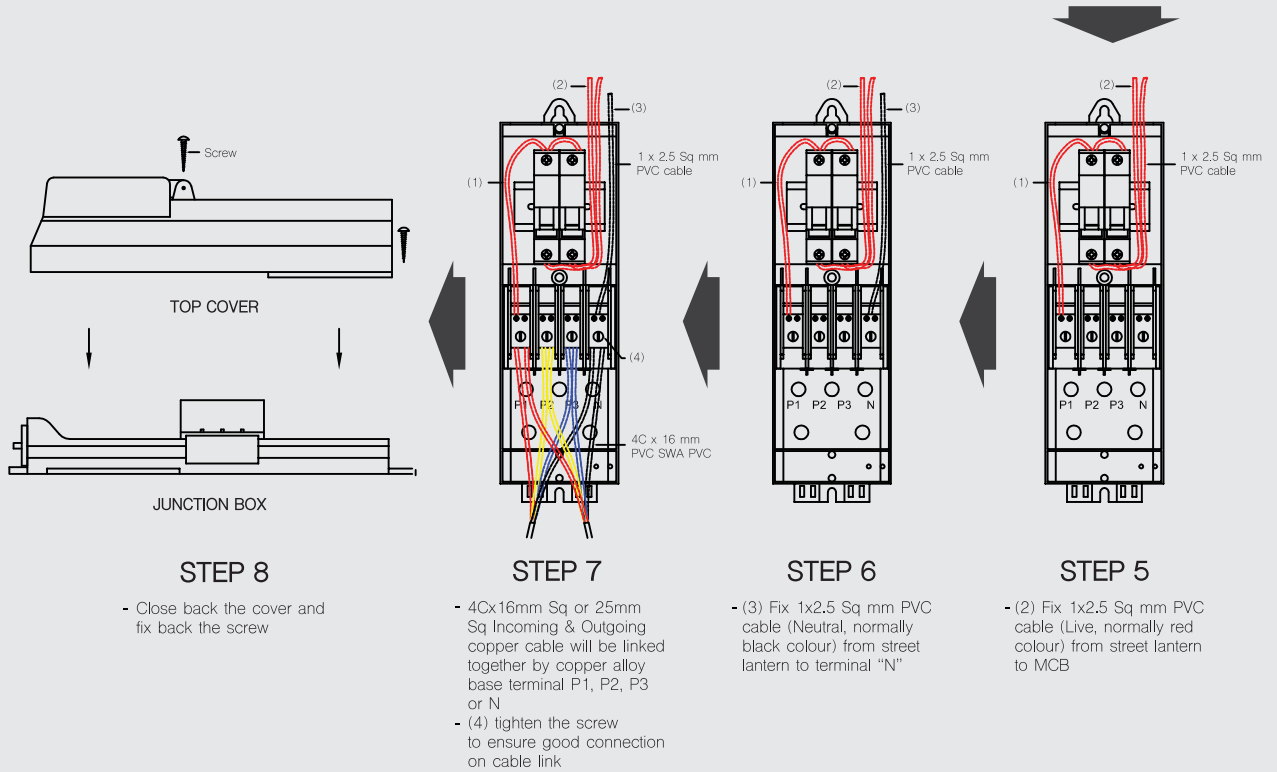
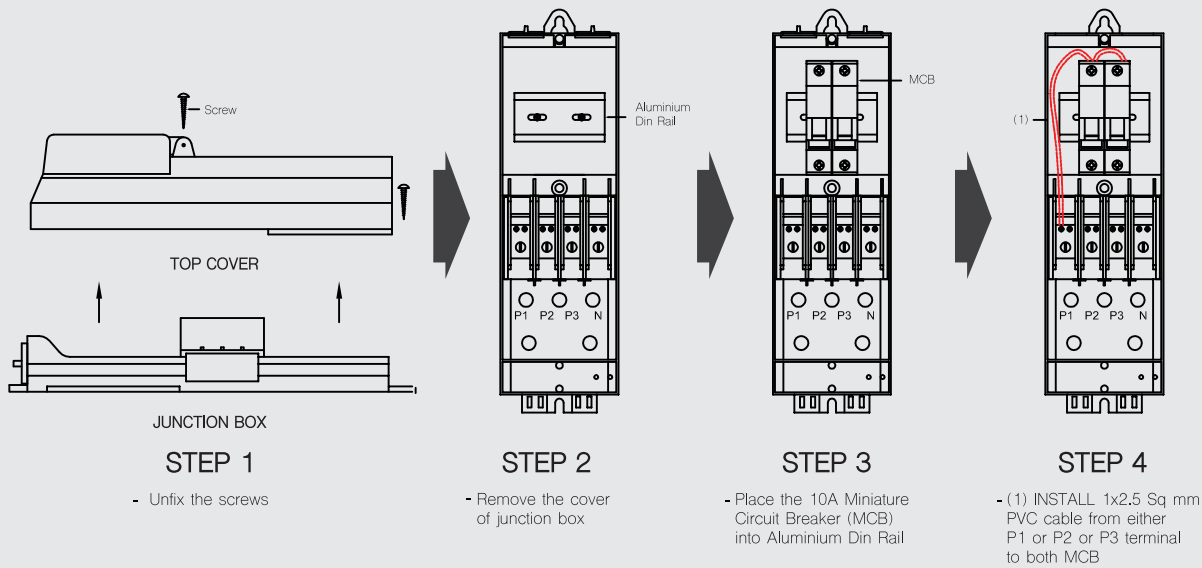
## Drawing



Plan View



Side View



## Accreditation



**STANDARD AND INDUSTRIAL RESEARCH INSTITUTE OF MALAYSIA (SIRIM)**

Licence No : 2015EEA0672  
 Standard : IEC 60998-2-1 : 2002  
 IEC 60998-1 : 2002



**MALAYSIAN PUBLIC WORKS DEPARTMENT (JKR)**

Licence No : 2015EEA0672 & 2015EEA0672-S1  
 Ref. No : (66)dIm.JKRL(PM) 5/1/4-14 Jilid 8  
 Standard : IEC 60998-1 : 2002  
 IEC 60998-2-1 : 2002



**#ThePoleMaker**

**MESTRON ENGINEERING SDN BHD** 591970-X

PT 50102, Jalan Meranti 1/9, Seksyen 10  
Taman Perindustrian Meranti Utama  
47120 Puchong, Selangor Darul Ehsan  
Malaysia

T	: +603 . 8069 1815
F	: +603 . 8069 1805
E	: info@mestron.com.my
W	: www.mestron.com.my

Visit Us :

