

MESTRON 12000 NOMINAL HEIGHT

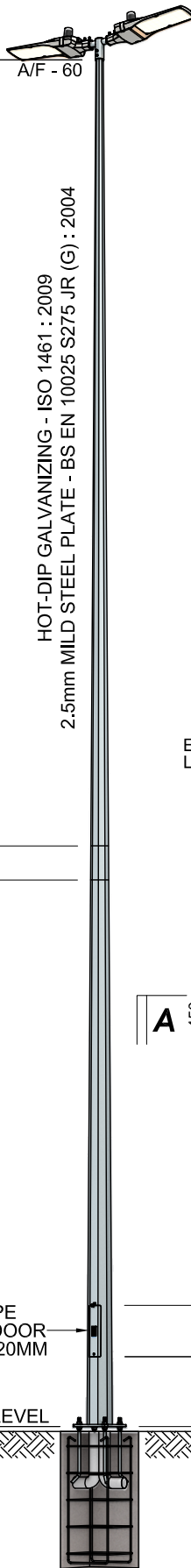
5050

7200

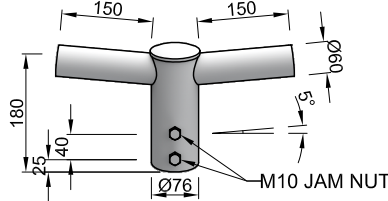
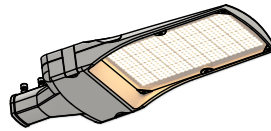
OL 300

FLUSH TYPE
SERVICE DOOR
450MM x 120MM

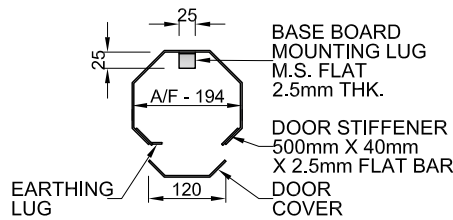
A/F - 207
GROUND LEVEL



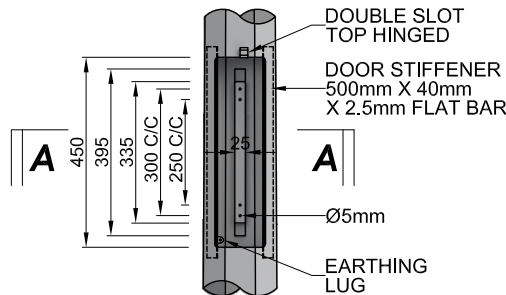
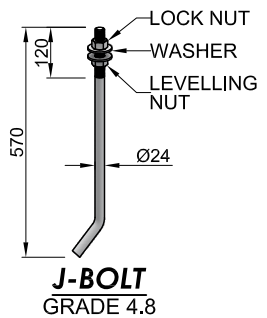
MAX SAIL AREA 0.3 M²



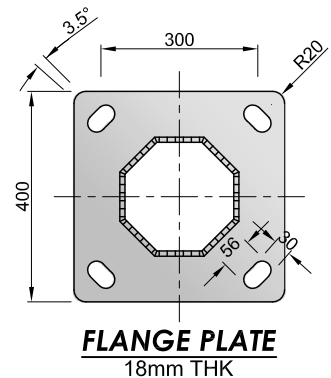
0.15M DOUBLE ARM



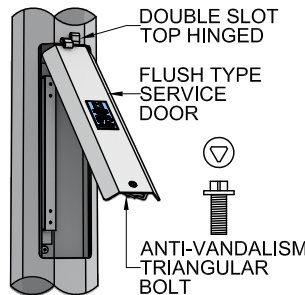
SECTION A-A



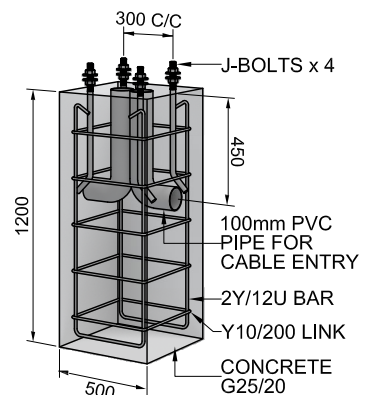
**SERVICE DOOR
DETAIL**



**FLANGE PLATE
18mm THK**



**SERVICE DOOR
DIAGONAL VIEW**



FOOTING DETAIL

WEIGHT (KGS) : 128 KGS



MESTRON ENGINEERING
SDN BHD (591970-X)

TEL : +603 . 8069 1815
FAX : +603 . 8069 1805
EMAIL : info@mestron.com.my
WEB : www.mestron.com.my

12M OCTAGONAL LIGHTING POLE FLANGE MOUNTED TYPE
0.15M DOUBLE ARM

DRAWN BY : ALIF

CHECKED BY : NEO

DRAWING NO. : 12M-FM-0.15-DSA

THIS DRAWING IS THE PROPERTY OF
MESTRON ENGINEERING SDN. BHD. AND MUST
NOT BE REPRODUCED OR MISUSED WITHOUT
THEIR PRIOR CONSENT IN WRITING.

ISSUE OF DATE : 27-11-2025

